



**FleetSelect**

## AIR SYSTEMS



### PARTS & SERVICE OPPORTUNITY

It is recommended if the truck was built with an oil coalescing air dryer cartridge, you should only use oil coalescing replacement cartridges. Money will not be saved by buying a less expensive cartridge because the oil that passes through your air system could cause expensive sensors to malfunction, costing you far more than the cost of the oil coalescing replacement cartridge.

### WHEN TO REPLACE AN AIR DRYER CARTRIDGE

The recommended time to replace an air dryer cartridge is between 1 to 2 years depending on usage and operating conditions. Typically you would expect to see little to no water draining from your vehicle's purge valve. If you are seeing water, it could be a sign that you need to replace your air dryer cartridge.

### FLEETSELECT AIR DRYER ASSEMBLIES & CARTRIDGES

An air dryer cartridge's primary function is to remove moisture and contaminants from the compressed air before it enters the air brake system of a commercial vehicle. This helps prevent corrosion, freezing, and other issues that can compromise braking performance and safety. After 2010, with the more fuel efficient engines, the engines are running hotter. This increased heat, along with lighter weight oil and additives, created more oil vapors in the air system. Oil Coalescing Air Dryer Cartridges perform better to prevent oil vapors from entering the brake air lines.

#### POPULAR AIR DRYER CARTRIDGES

FleetSelect Part	Air Dryer Cartridge Application	Cartridge Style
5008414PGFS	AD-IS® Air Dryer Cartridge	Oil Coalescing
5009041PGFS	AD-HF® Air Dryer Cartridge	Oil Coalescing
R950068FS	SS1200/SSTWIN Air Dryer Cartridge	Oil Coalescing
109994FS	AD-SP®/AD-IS® Air Dryer Cartridge	Traditional
107796FS	AD-9® Air Dryer Cartridge	Traditional

#### POPULAR AIR DRYER ASSEMBLIES

FleetSelect Part	Air Dryer Assembly Description	Introduction Year
801266FS	Air Dryer Assembly AD-IS®	2014
800887FS	Air Dryer Assembly AD-SP®	2011
065612FS	Air Dryer Assembly AD-IP®	2010
065225FS	Air Dryer Assembly AD-9®	1989

#### POPULAR AIR DRYER SYSTEM COMPONENTS

FleetSelect Part	Component Description
800840FS	MV3 Dash Valve
K022105FS	Purge Valve Kit AD-IP®/AD-IS®

USE OF OTHER MANUFACTURER'S NAMES, PART NUMBERS, OR TRADEMARKS ARE SOLELY USED FOR INFORMATIONAL/IDENTIFICATION PURPOSES.

## POPULAR AIR DRYER CARTRIDGES



5008414PGFS

AD-IS® OIL COALESCING AIR DRYER CARTRIDGE



5009041PGFS

AD-HF® OIL COALESCING AIR DRYER CARTRIDGE



R950068FS

SS1200/SSTWIN AIR DRYER CARTRIDGE



109994FS

AD-SP®/AD-IS® AIR DRYER CARTRIDGE



107796FS

AD-9® AIR DRYER CARTRIDGE

## POPULAR AIR DRYER ASSEMBLIES



801266FS

AD-IS® AIR DRYER ASSEMBLY



800887FS

AD-SP® AIR DRYER ASSEMBLY



065612FS

AD-IP® AIR DRYER ASSEMBLY



065225FS

AD-9® AIR DRYER ASSEMBLY

## POPULAR AIR DRYER SYSTEM COMPONENTS



800840FS

MV-3 DASH VALE



K022105FS

AD-IP®/AD-IS® PURGE VALVE KIT

**BRAKE CHAMBERS & BRAKE COMPONENTS**



**BRAKE CHAMBERS AND BRAKE COMPONENTS**

FleetSelect Brake Chambers and Brake Components are manufactured to meet or exceed all OE specifications. The Brake Chambers and Brake Components, along with all FleetSelect products, are vigorously tested in house by engineers and skilled technicians in an unsurpassed quality control laboratory. The FleetSelect Brake Chambers and Brake Components listed below are for popular applications. For a complete list of brake components available, please contact or visit an authorized FleetSelect dealer.



**3030-TSFS**

**30/30  
BRAKE  
CHAMBER**

**NT3030STD-WCFS**

**30/30 BRAKE  
CHAMBER WITH  
WELDED CLEVIS**

**3030-TSLSFS**

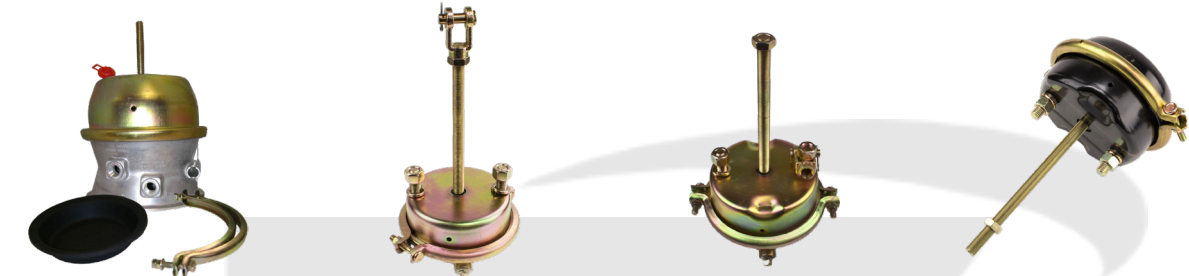
**30/30 LONG  
STROKE BRAKE  
CHAMBER**

**GC3030LCWFS**

**30/30 LONG  
STROKE WITH  
WELDED CLEVIS**

**3030-PSKFS**

**30/30  
PIGGYBACK  
KIT**



**3030-PSLSKFS**

**30/30 LONG  
STROKE PIGGYBACK  
KIT**

**20SCFS**

**T20  
SERVICE  
CHAMBER**

**24SCFS**

**T24  
SERVICE  
CHAMBER**

**30SCFS**

**T30  
SERVICE  
CHAMBER**

**POPULAR BRAKE CHAMBERS**

FleetSelect Part Number	Description	Industry XREF	Industry XREF
3030-TSFS	30/30 Brake Chamber	3430051	GC3030
NT3030STD-WCFS	30/30 Brake Chamber w/ Welded Clevis	TR3030C-WC	GC3030CW
3030-TSLSFS	30/30 Long Stroke Brake Chamber	3230051	GC3030L
GC3030LCWFS	30/30 Long Stroke w/ Welded Clevis	NT3030ELC-WC	GC3030LCW
3030-PSKFS	30/30 Piggyback Kit	3430008	GP3030K
3030-PSLSKFS	30/30 Long Stroke Piggyback Kit	3230008	GP3030LK
20SCFS	T20 Service Chamber	800824	SC20
24SCFS	T24 Service Chamber	800825	SC24
30SCFS	T30 Service Chamber	800826	SC30

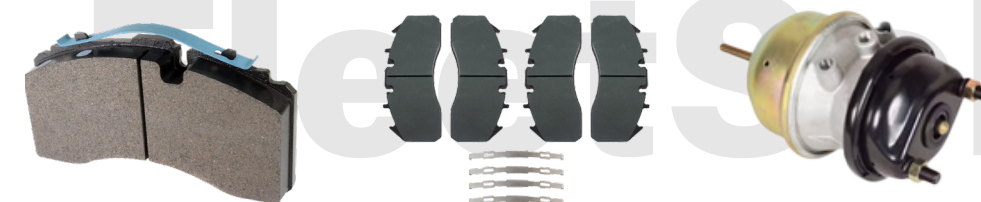
**POPULAR AIR DISC BRAKE COMPONENTS**

FleetSelect Part Number	Description	Industry XREF	Industry XREF
802078FS	Air Disc Brake Pad FMSI 1369 ADB22X	MMD1369	K182236
29087FS	Air Disc Brake Pad SB7 & SN7	K109249	K046771K50
K132352FS	T18/24 Brake Chamber	TRB1824DT051	GC1824D

**POPULAR MEDIUM DUTY HYDRAULIC DISC BRAKE**

FleetSelect Part Number	Description	Industry XREF	Industry XREF
MKD786AFS	Air Disc Brake Pad 66mm	MD786A	MMD786A

**POPULAR AIR DISC BRAKE COMPONENTS**



**802078FS**

**AIR DISC BRAKE  
PAD FMSI 1369  
ADB22X**

**29087FS**

**AIR DISC  
BRAKE PAD  
SB7 & SN7**

**K132352FS**

**T18/24  
BRAKE  
CHAMBER**



**MKD786AFS**

**AIR DISC  
BRAKE PAD  
66MM**

USE OF OTHER MANUFACTURER'S NAMES, PART NUMBERS, OR TRADEMARKS ARE SOLELY USED FOR INFORMATIONAL/IDENTIFICATION PURPOSES.

**CAB & BODY**



**FLEETSELECT CAB & BODY PRODUCT INFORMATION**

FleetSelect offers a broad selection of parts associated with the Cab & Body of most Class 7 and 8 vehicles from Peterbilt, Kenworth, Volvo, Mack, Freightliner and International just to name a few. The parts included in the program range from, but not limited to, Headlights, Mirrors, Front and Rear Body Parts, and Parts for the cab of the vehicle. Listed below are examples of popular Cab & Body parts.

POPULAR HEADLIGHTS		
FleetSelect Part	Description	Application
16-09190LFS	Headlight Assembly LH	Peterbilt 386, 387, 2002-2016
16-09190RFS	Headlight Assembly RH	Peterbilt 386, 387, 2002-2016
82329124FS	Headlight Assembly Halogen - LH	Volvo VNL 2004-2018
82329127FS	Headlight Assembly Halogen - RH	Volvo VNL 2004-2018
S-26682FS	Headlight Assembly Set - LH/RH	Kenworth T660 2007-2020
POPULAR SIDE MIRRORS		
FleetSelect Part	Description	Application
97814FS	8.5" Convex Offset Mirror	Universal
97803FS	8.5" Convex Mirror	Universal
97861FS	7" x 16" West Coast Mirror	Universal
97809FS	7" x 16" West Coast Mirror - Heated	Universal
POPULAR REAR BODY PARTS		
FleetSelect Part	Description	Application
15-06080FS	Fender Liner	Peterbilt 379
FLT1900KITFS	Quarter Fender Kit - 24"	Universal
MFH-0012RFS	Mudflap Hanger, RH, w/ Reflective Tape	Universal
MFH-0012LFS	Mudflap Hanger, LH, w/ Reflective Tape	Universal
POPULAR CAB PARTS		
FleetSelect Part	Description	Application
E006-185FS	Windshield Wiper Motor	Peterbilt 389, 2008-2022
85122759FS	Windshield Wiper Motor	Volvo VNL 2004-2014
R23-6002FS	Wiper Arm	Peterbilt 379, 1990-2007
3092868FS	Cab Seat Air Hose Kit	Universal

USE OF OTHER MANUFACTURER'S NAMES, PART NUMBERS, OR TRADEMARKS ARE SOLELY USED FOR INFORMATIONAL/IDENTIFICATION PURPOSES.

**POPULAR HEADLIGHTS**



**16-09190LFS**

**HEADLIGHT ASSEMBLY  
LH - PETERBILT**

**16-09190RFS**

**HEADLIGHT ASSEMBLY  
RH - PETERBILT**

**S-26682FS**

**HEADLIGHT ASSEMBLY SET  
LH/RH KENWORTH**



**82329124FS**

**HEADLIGHT ASSEMBLY HALOGEN  
LH - VOLVO**



**82329127FS**

**HEADLIGHT ASSEMBLY HALOGEN  
RH - VOLVO**

**POPULAR SIDE MIRRORS**



**97814FS**

**8.5"  
CONVEX OFFSET  
MIRROR - UNIVERSAL**

**97803FS**

**8.5"  
CONVEX  
MIRROR - UNIVERSAL**

**97861FS**

**7"X16"  
WEST COAST  
MIRROR - UNIVERSAL**

**97809FS**

**7"X16"  
WEST COAST MIRROR  
HEATED - UNIVERSAL**



**15-06080FS**

**FENDER  
LINER - PETERBILT**



**FLT1900KITFS**

**QUARTER  
FENDER KIT  
24" - UNIVERSAL**



**MFH-0012RFS**

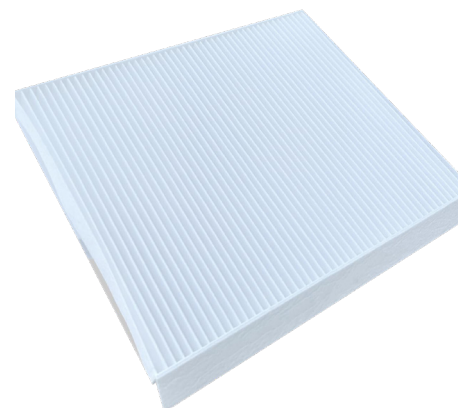
**MUDFLAP HANGER  
RH W/ REFLECTIVE  
TAPE - UNIVERSAL**



**MFH-0012LFS**

**MUDFLAP HANGER  
LH W/ REFLECTIVE  
TAPE - UNIVERSAL**

**HVAC**



**PARTS & SERVICE  
OPPORTUNITY**

It is recommended that the cabin air filter be inspected 4 times a year and replaced if necessary. A clogged cabin air filter will strain the HVAC system making it work harder to circulate the air flow. The vehicles blower motor could be negatively affected and life span reduced by a clogged or dirty cabin air filter.

**POPULAR CAB PARTS**



**E006-185FS**

**WINDSHIELD  
WIPER MOTOR  
PETERBILT**



**85122759FS**

**WINDSHIELD  
WIPER MOTOR  
VOLVO**



**R23-6002FS**

**WIPER ARM  
PETERBILT**



**3092868FS**

**CAB SEAT  
AIR HOSE  
KIT**

**CABIN AIR FILTERS PRODUCT INFORMATION**

The cabin air filter will clean the air entering the cabin through the heating, ventilation, and air conditioning (HVAC) system. It filters out dust, pollen, pollutants, and other contaminants that can enter the vehicle from the outside air, helping to maintain a cleaner and healthier environment for the driver. A clean cabin air filter allows for the optimal airflow through the HVAC system, preventing the system from working harder than necessary and potentially improving the HVAC efficiency.

**POPULAR CABIN AIR FILTERS**

FleetSelect Part	OEM Part	Application	Size
ABP N10G 36000006FS	ABP-N10G-36000006	Freightliner 2002-2020	8.6"x8.4"x1"
ABP N10G 91559FS	ABP-N10G-91559	Cascadia 2009-24 DD13, DD15	10.6"x10.6"x1"
X1987001FS	SR2000092	PACCAR/International	7.9"x8.9"x1.2"
20435801FS	20435801	Volvo VN, VNL	12"x9"x1.25"
F37-1018FS	F37-1018	Kenworth/Peterbilt	7.9"x8.9"x.4"
23-15619FS	23-15619	Peterbilt	10.75"x8"x.33"
3839-141-CFS	ABP-N83-325517	Freightliner, International	12.38"x6.25"x1.13"

USE OF OTHER MANUFACTURER'S NAMES, PART NUMBERS, OR TRADEMARKS ARE SOLELY USED FOR INFORMATIONAL/IDENTIFICATION PURPOSES.



**ABP N10G 3600006FS**

**ABP N10G 91559FS**

**X1987001FS**

**20435801FS**

**FREIGHTLINER**  
2002-2020  
8.6"X8.4"X1"

**CASCADIA**  
2009-24 DD13, DD15  
10.6"X10.6"X1"

**PACCAR INTERNATIONAL**  
7.9"X8.9"X1.2"

**VOLVO**  
VN, VNL  
12"X9"X1.25"



**F37-1018FS**

**23-15619FS**

**3839-141-CFS**

**KENWORTH**  
**PETERBILT**  
7.9"X8.9"X.4"

**PETERBILT**  
10.75"X8"X.33"

**FREIGHTLINER INTERNATIONAL**  
12.38"X6.25"X1.13"

**PTO & HYDRAULICS**



**PTO UNITS PRODUCT INFORMATION**

FleetSelect PTO's are assembled using state of the art computer monitored torque wrenches. A computer records the torque of every bolt & saves the data by date & assembly number. After assembling, as a final test, the PTO is mounted to an electric driven transmission where it is checked for noise, vibration, and shifting. All FleetSelect PTO replacement parts are 100% interchangeable with OEM parts.

442 and 489 PTO's are available in multiple transmission applications and ratios with metric and standard mounting bolts. 880 PTO's are also available for the Eaton transmission with multiple ratios.

POPULAR 442 PTO		
FleetSelect Part	Chelsea Part	Muncie Part
442XQAHX-A3XKFS	442XQAHX-A3XK	TG6L-U6808-A1KX
442ZSDAX-W3XDFS	442ZSDAX-W3XD	
POPULAR 489 PTO		
FleetSelect Part	Chelsea Part	Muncie Part
489XHAHX-A5XKFS	489XHAHX-A5XK	TG8S-U6807-A3KX
489ZLDAX-W5XDFS	489ZLDAX-W5XD	
POPULAR 880 PTO		
FleetSelect Part	Chelsea Part	Muncie Part
880XRAHX-V3XSFS	880XRAHX-V3XS	828S-U6813-T1EX

**HYDRAULICS PRODUCT INFORMATION**

Durable and dependable, the FleetSelect hydraulic tanks are available in either aluminum, powder coated stainless steel, or polyethylene. Sizes range from 15 to 100 gallon tanks and come in 3 different mounting styles: saddle mount, side mount, and upright.

POPULAR HYDRAULIC TANKS		
FleetSelect Part	Industry Part	Description
A4000FS	A4000	Hydraulic Tank Kit - Aluminum 50 Gal
A4500FS	A4500	Hydraulic Reservoir - Saddle Mount - 50 Gal
POPULAR COMPONENTS		
FleetSelect Part	Industry Part	Description
C102ASFS	C102AS	Dump Pump w/ Air Shift Cylinder
PB10FS	PB10	Direct Pump Mounting Kit
S-17199FS	S-17199	Pressure Hose Kit
AVC295-FS	AVC295-8	PTO/Pump Combo Valve Kit

USE OF OTHER MANUFACTURER'S NAMES, PART NUMBERS, OR TRADEMARKS ARE SOLELY USED FOR INFORMATIONAL/IDENTIFICATION PURPOSES.

## POPULAR 442 PTO



442XQAHX-A3XKFS

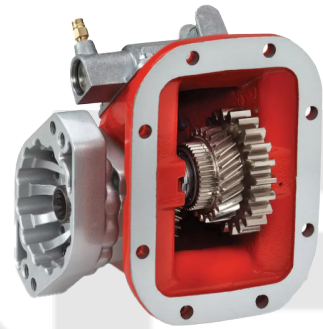
442  
PTO



442ZSDAX-W3XDFS

442  
PTO

## POPULAR 489 PTO



489XHAHX-A5XKFS

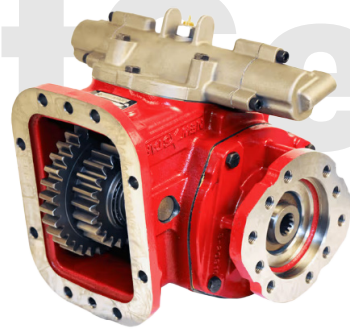
489  
PTO



489ZLDAX-W5XDFS

489  
PTO

## POPULAR 880 PTO



880XRAHX-V3XSFS

880  
PTO

## POPULAR HYDRAULIC TANKS



A4000FS

HYDRAULIC  
TANK KIT  
ALUMINUM 50 GAL



A4500FS

HYDRAULIC RESERVOIR  
SADDLE MOUNT  
50 GAL

## POPULAR COMPONENTS



C102ASFS

DUMP PUMP  
W/ AIR SHIFT  
CYLINDER



PB10FS

DIRECT PUMP  
MOUNTING  
KIT



S-17199FS

PRESSURE  
HOSE KIT



AVC295-FS

PTO/PUMP  
COMBO VALVE KIT

**TRUCK AND TRAILER SHOCK ABSORBERS**



**PRODUCT INFORMATION**

- Double lip oil seal design reduces wear, impact, and is pressure resistant.
- High Precision metal stamping and tube material results in longer life for piston.
- Piston and compression valve use 2-way structure design for improved damping force control.
- Overall quality provides superior ride.

**PARTS & SERVICE OPPORTUNITY**

Indications that service may be required and the shocks should be inspected include: uneven tire wear, excess vibration, broken or torn air springs, and sagging taper leaf springs. It is recommended to inspect the air springs anytime a shock absorber has failed.



**85989FS**

**KENWORTH &  
PETERBILT  
FRONT**

**85069FS**

**KENWORTH &  
PETERBILT  
REAR**

**85067FS**

**KENWORTH &  
PETERBILT  
REAR**

**85062FS**

**KENWORTH &  
PETERBILT  
FRONT**

**83008FS**

**PETERBILT  
CAB**

**POPULAR PETERBILT/KENWORTH APPLICATIONS**

FleetSelect Part	Axle/Cab	Popular Applications
85989FS	Front	Kenworth K270, T270, T370, T680 & T880 Models Peterbilt 348, 567 & 579 Series
85069FS	Rear	Peterbilt 330, 335, 337, 357, 362, 365, 367, 378, 379, 382, 384-389, 567, 579 & 587 Series Kenworth T270, T370, T660, T680, T800, T880, W900B & W900L Models
85067FS	Rear	Peterbilt 365, 367, 378, 379, 382, 384-389, 567, 579 & 587 Series Kenworth T2000, T440, T470, T600, T600A, T600B, T602, T660, T680, T700, T800, W900 Models
85062FS	Front	Multiple Kenworth Applications Peterbilt 320, 357, 365, 367, 375-379, 382, 384, 385, 387-389, 567, 579 & 587 Series
83008FS	Cab	Peterbilt 367, 377, 379 Series w/ Uni-built Cab & 389 series w/70" Sleeper (2008)

**POPULAR MACK/VOLVO APPLICATIONS**

FleetSelect Part	Axle/Cab	Popular Applications
83048FS	Cab	Volvo VAH 430 Models w/ 42" Sleeper Cabs Volvo VNL, VN, VHD, & VNL 64T-630 Models
85088FS	Rear	Mack CHU, CXN, CXU Series Volvo VAH, VNL, VNM, VNR, VNX Models
85061FS	Front	Mack CHN, CX, CXN, CXP & CXU Models Volvo VNL Models

**POPULAR FREIGHTLINER/INTERNATIONAL/BLUEBIRD APPLICATIONS**

FleetSelect Part	Axle/Cab	Popular Applications
85919FS	Front/Bus	MULTIPLE FRT/VOLVO/IH & BLUEBIRD APPLICATION
85724FS	Rear	International 4700 Series Freightliner Argosy, Colombia, Condor, Coronado & FL50-FL80 Class
85311FS	Rear	International 4000, 5000, 6000, 7000 & 9000 Series
85918FS	Front	Freightliner Argosy, Cascadia, Century, Columbia, FLC112, FLC120, FLD112, FLD120, M2 Class
83038FS	Cab	Freightliner Cascadia, Columbia, Cornado, M2, 108SD, 114SD & 112SD Class

**POPULAR HENDRICKSON APPLICATIONS**

FleetSelect Part	Axle/Cab	Popular Applications
85000FS	Trailer	Hendrickson VANTRAAX, INTRAAX

**POPULAR MACK/VOLVO APPLICATIONS**



**83048FS**

**VOLVO  
CAB**

**85088FS**

**MACK &  
VOLVO  
REAR**

**85061FS**

**MACK &  
VOLVO  
FRONT**

USE OF OTHER MANUFACTURER'S NAMES, PART NUMBERS, OR TRADEMARKS ARE SOLELY USED FOR INFORMATIONAL/IDENTIFICATION PURPOSES.



**85919FS**

**FREIGHTLINER/VOLVO  
IH & BLUEBIRD  
FRONT/BUS**



**85724FS**

**INTERNATIONAL &  
FREIGHTLINER  
REAR**



**85311FS**

**INTERNATIONAL  
REAR**



**85918FS**

**FREIGHTLINER  
REAR**



**83038FS**

**FREIGHTLINER  
FRONT**

**POPULAR COMPONENTS**



**85000FS**

**HENDRICKSON  
TRAILER**

**SLACK ADJUSTERS**



**PRODUCT INFORMATION**

- Automatic Slack Adjusters keep brakes in constant alignment.
- Tractor and Trailer applications available.
- Multiple ASA styles available (Haldex, Gunite, Meritor)

**PARTS & SERVICE OPPORTUNITY**

Physically inspect the automatic slack adjuster for signs of damage or visible wear. It is recommended practice to grease the automatic slack adjusters every six months or during the standard maintenance interval. Automatic slack adjusters do not need to be replaced in pairs on the axle.

**SLACK ADJUSTERS**

FleetSelect automatic slack adjusters are manufactured to meet or exceed all OE specifications. The automatic slack adjusters, along with all FleetSelect products, are vigorously tested in house by engineers and skilled technicians in an unsurpassed quality control laboratory. Automatic slack adjusters are designed to continuously maintain the brakes in proper adjustment during normal use. A properly installed, lubricated, and maintained automatic slack adjuster, along with properly maintained brake chambers and brake components, will not need manual adjustment.

The FleetSelect automatic slack adjusters listed below are for popular applications. For a complete list of automatic slack adjusters available, please contact or visit an authorized FleetSelect dealer.

**POPULAR TRUCK AXLE APPLICATION**

Style	FleetSelect Part Number	Industry XREF	Industry XREF	Industry XREF	Arm Length	Dia-Spline
Haldex	400-10140FS	133.2830	E-6925B	05-655	5", 6"	1.5" - 28
Haldex	400-10141FS	133.2831	E-6927B	05-663	5.5"	1.5" - 28
Haldex	400-10143FS	133.1031	E-6992A	05-661	5.5"	1.5" - 10
Haldex	400-10144FS	133.2832	E-6918A	05-659	6.0"	1.5" - 28
Gunite	AS1140FS	138.2810	E-15024	05-763	5.5"	1.5" - 28
Gunite	AS1141FS	138.2830	E-15025	05-762	6.0"	1.5" - 28
Gunite	AS1132FS	138.1011	E-15016	05-761	5.5"	1.5" - 10
Gunite	AS1133FS	138.1030	E-15017	05-760	6.0"	1.5" - 10

**POPULAR TRAILER APPLICATION**

Style	FleetSelect Part Number	Industry XREF	Industry XREF	Industry XREF	Arm Length	Dia-Spline
Meritor	R801073FS	139.2831	E-11401	05-363	5.5"	1.5" - 28
Meritor	R801074FS	139.2830	E-11402	05-362	6.0"	1.5" - 28
Haldex	400-10211FS	133.2840	E-6944	05-668	5.5"	1.5" - 28
Haldex	400-10212FS	133.2841	E-6942	05-662	6.0"	1.5" - 28

**POPULAR MANUAL SLACK ADJUSTER**

Style	FleetSelect Part Number	Industry XREF	Industry XREF	Industry XREF	Arm Length	Dia-Spline
Manual Adjust	KN-47001FS	134.1041	M434	05-203	5", 6", 7"	1.5"-10

USE OF OTHER MANUFACTURER'S NAMES, PART NUMBERS, OR TRADEMARKS ARE SOLELY USED FOR INFORMATIONAL/IDENTIFICATION PURPOSES.

# POPULAR TRUCK AXLE APPLICATION



**400-10140FS**

**HALDEX STYLE**  
5", 6" - 28 SPL



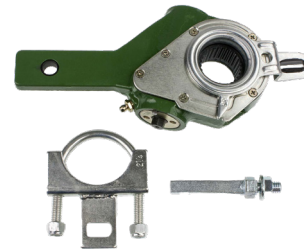
**400-10141FS**

**HALDEX STYLE**  
5.5" - 28 SPL



**400-10143FS**

**HALDEX STYLE**  
5.5" - 10 SPL



**400-10144FS**

**HALDEX STYLE**  
6" - 28 SPL



**AS1140FS**

**GUNITE STYLE**  
5.5" - 28 SPL



**AS1141FS**

**GUNITE STYLE**  
6" - 28 SPL



**AS1132FS**

**GUNITE STYLE**  
5.5" - 10 SPL



**AS1133FS**

**GUNITE STYLE**  
6" - 10 SPL

## POPULAR TRAILER APPLICATION



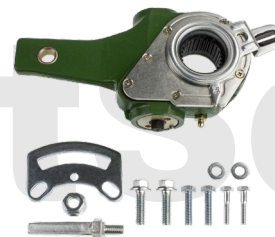
**R801073FS**

**MERITOR STYLE**  
5.5" - 28 SPL



**R801074FS**

**MERITOR STYLE**  
6" - 28 SPL



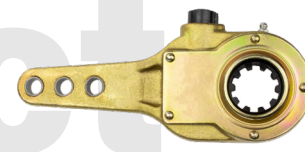
**400-10211FS**

**HALDEX STYLE**  
5.5" - 28 SPL



**400-10212FS**

**HALDEX STYLE**  
6" - 28 SPL



**KN-47001FS**

**MANUAL ADJUST**  
5", 6", 7" - 10 SPL

## POPULAR MANUAL SLACK ADJUSTER

## TRAILER AIR & ELECTRICAL



### PRODUCT INFORMATION

- Gladhand seals available in both rubber and polyurethane
- 3-in-1 rubber air hose protects against cracks and kinks
- Heavy Duty zinc die cast plugs with ABS coiled cable

### PARTS & SERVICE OPPORTUNITY

It is recommended to replace the gladhands when the detent plate shows signs of heavy wear or the plate is loose. It is recommended to change out the gladhand seals once a year or when signs of heavy wear or cracking appear.

### FLEETSELECT TRAILER AIR & ELECTRICAL

FleetSelect trailer air and electrical parts are manufactured to meet or exceed all OE specifications. The gladhands, seals, and related air / electrical hoses, along with all FleetSelect products, are vigorously tested in house by engineers and skilled technicians in an unsurpassed quality control laboratory. A tractor / trailer typically has two color coded gladhands. The blue gladhand for the service brake line and red for the emergency brake line.

The FleetSelect trailer air and electrical parts listed below are for popular applications. For a complete list of trailer air and electrical parts available, please contact or visit an authorized FleetSelect dealer.

### POPULAR GLADHAND SEALS

FleetSelect Part	Description	Industry XREF	Industry XREF
10028FS	Seal - Gladhand Rubber	80-0163	10111
DA9017BFS	Seal - Gladhand Service Blue Polyurethane	80-0161	101115B
DA9017RFS	Seal - Gladhand Service Red Polyurethane	80-0162	101115R
S-26694FS	Seal with Filter - Gladhand Service Blue Polyurethane	12-01611	16252
S-26693FS	Seal with Filter - Gladhand Emergency Red Polyurethane	12-01621	16253

### POPULAR GLADHANDS

FleetSelect Part	Description	Industry XREF	Industry XREF
11452FS	Gladhand - Service Blue 1/2"	12-006	1011S
11451FS	Gladhand - Emergency Red 1/2"	12-008	1011E

### ASSOCIATED TRAILER AIR/ELECTRICAL PARTS

FleetSelect Part	Description	Industry XREF	Industry XREF
BE23784FS	Plug - 7 Way	15-730	670-71SG
BE23703FS	Socket - 7 Way	15-720	680-7330
BE27072FS	ABS Coiled Set - 7 Way, 15 FT	30-4921	23460
BE27127FS	Hose Kit - 3 in 1 Air / Electrical 12 FT	30-2151	168127
BE27157FS	Hose Kit - 3 in 1 Air / Electrical 15 FT	30-2174	168157
11954FS	Air Coil Assembly - 15 FT	11-340	11954

# POPULAR GLADHAND SEALS



10028FS

SEAL  
GLADHAND  
RUBBER



DA9017BFS

SEAL - GLADHAND  
SERVICE BLUE  
POLYURETHANE



DA9017RFS

SEAL - GLADHAND  
SERVICE RED  
POLYURETHANE



S-26694FS

SEAL WITH FILTER  
GLADHAND SERVICE  
BLUE POLYURETHANE



S-26693FS

SEAL WITH FILTER  
GLADHAND EMERGENCY  
RED POLYURETHANE

# POPULAR GLADHANDS



11452FS

GLADHAND  
SERVICE BLUE  
1/2"



11451FS

GLADHAND  
EMERGENCY RED  
1/2"



16216FS

AIR BRAKE  
GLADHAND  
HANDLE GRIP

# ASSOCIATED TRAILER AIR/ELECTRICAL PARTS



BE23784FS

PLUG  
7 WAY



BE23703FS

SOCKET  
7 WAY



BE27072FS

ABS COILED  
SET - 7 WAY  
15 FT



BE27127FS

HOSE KIT  
3 IN 1 AIR  
ELECTRICAL 12 FT



BE27157FS

HOSE KIT  
3 IN 1 AIR  
ELECTRICAL 15 FT



11954FS

AIR COIL  
ASSEMBLY  
15 FT

# TRUCK, CAB, & TRAILER AIR SPRINGS



## PRODUCT INFORMATION

- Improved ride comfort and reduced vehicle vibration
- Increase load carrying capacity
- Improved stability

## PARTS & SERVICE OPPORTUNITY

When the vehicle is being inspected, it is recommended that the air springs are checked for small cracks and if present, replaced to avoid the cracks developing into a bigger leak over time. It is also recommended that if one air spring is replaced that the adjoining air spring on the axle be replaced as well.

## TRUCK, CAB, & TRAILER AIR SPRINGS

FleetSelect air springs are manufactured to meet or exceed all OE specifications. The air springs, along with all FleetSelect products, are vigorously tested in house by engineers and skilled technicians in an unsurpassed quality control laboratory. Air spring suspensions are superior to leaf springs compensating for uneven road surfaces allowing your vehicle to glide easily over the road. Air springs allow the driver to adjust the ride height for improved load carrying ability and vehicle stability. The FleetSelect air springs listed below are for popular applications. For a complete list of air springs available, please contact or visit an authorized FleetSelect dealer.

POPULAR TRUCK APPLICATION		
FleetSelect Part Number	Industry XREF	Application
1R12-303FS	W01-358-9780	Freightliner
1R12-603FS	W01-358-9781	Freightliner
1R12-654FS	21132005	Volvo
1R12-432FS	W01-358-9875	Navistar
1R12-375FS	W01-358-9265	Hendrickson
C81-1013FS	W01-358-8864	PACCAR
W01-358-8813FS	C81-1012	PACCAR
1R12069FS	W01-358-9069	PACCAR
POPULAR CAB APPLICATION		
FleetSelect Part Number	Industry XREF	Application
R81-1001FS	W02-358-7001	Volvo, Navistar, Kenworth
1S5-040FS	W02-358-7087	Freightliner
29-03200FS	W02-358-7036	PACCAR
POPULAR TRAILER APPLICATION		
FleetSelect Part Number	Industry XREF	Application
W01-358-8709FS	S-21800	Hendrickson
1R11-668FS	S-28929	Hendrickson

USE OF OTHER MANUFACTURER'S NAMES, PART NUMBERS, OR TRADEMARKS ARE SOLELY USED FOR INFORMATIONAL/IDENTIFICATION PURPOSES.

# POPULAR TRUCK APPLICATION



1R12-303FS

FREIGHTLINER



1R12-603FS

FREIGHTLINER



1R12-654FS

VOLVO



1R12-432FS

NAVISTAR



1R12-375FS

HENDRICKSON



C81-1013FS

PACCAR



W01-358-8813FS

PACCAR



1R12-069FS

PACCAR



# FLEETSELECT Product Portfolio

FleetSelect offers the most popular service and maintenance parts at competitive prices to service heavy duty, medium duty, and trailer applications. Visit an authorized FleetSelect dealer today for pricing and information.

**VISIT ONE OF OUR LOCATIONS TODAY!**



## POPULAR CAB APPLICATION



R81-1001FS

VOLVO  
NAVISTAR  
KENWORTH



1S5-040FS

FREIGHTLINER



29-03200FS

PACCAR

## POPULAR TRAILER APPLICATION



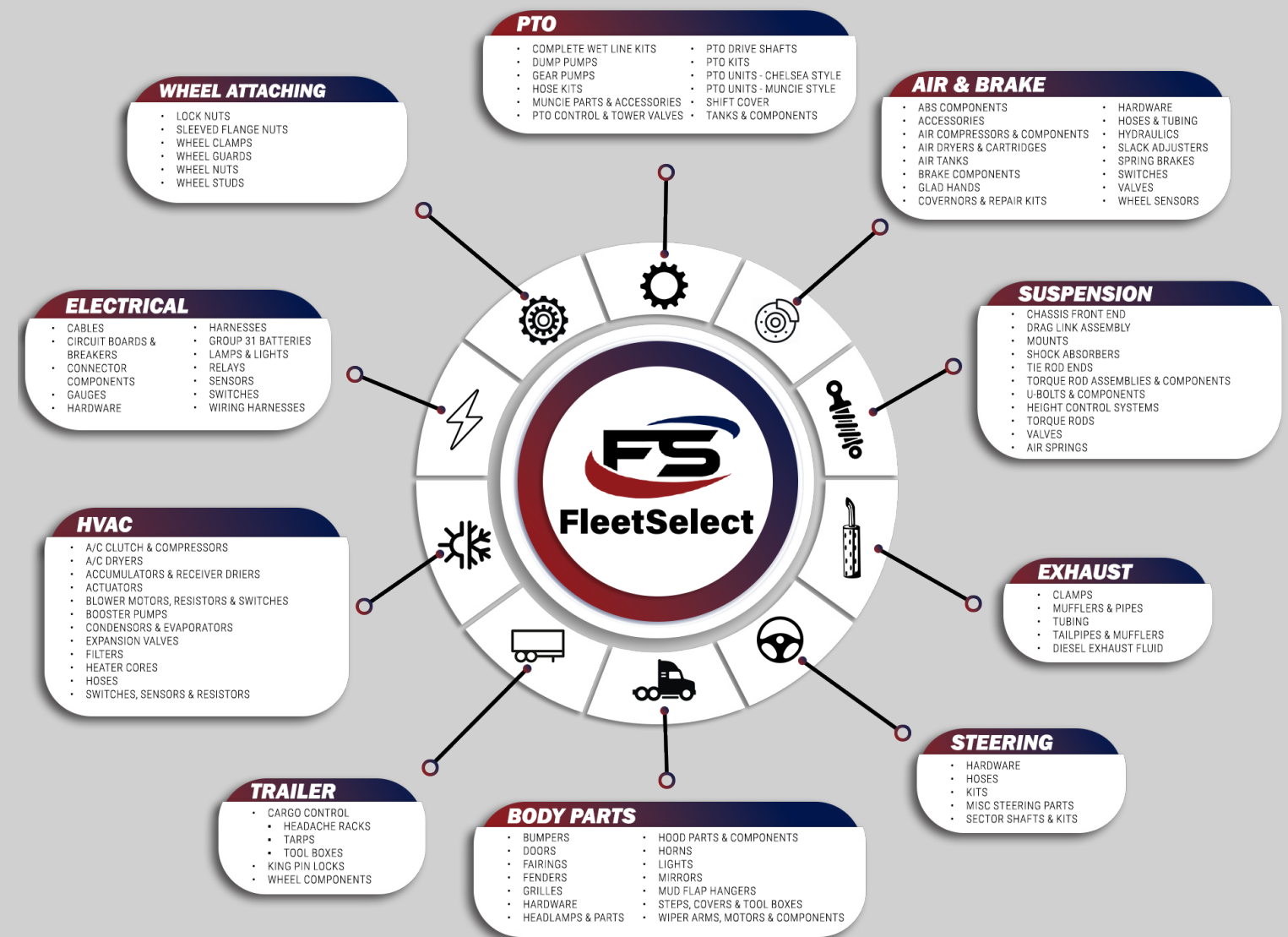
W01-358-8709FS

HENDRICKSON



1R12-668FS

HENDRICKSON





# FleetSelect

VISIT AN AUTHORIZED DEALER TODAY!

**DOBBS PETERBILT**

**DOBBS TRP®**

**WESTERN TRUCK CENTER**

## WASHINGTON

### **SPOKANE, WA**

23501 E. KNOX AVENUE  
LIBERTY LAKE, WA 99019  
(800) 572-6219 | (509) 535-4241

### **SUMNER, WA**

2800 136TH AVENUE COURT E.  
SUMNER, WA 98390  
(253) 344-5255

### **MARYSVILLE, WA**

15330 SMOKEY POINT BOULEVARD  
MARYSVILLE, WA 98271  
(888) 755-7383 | (360) 659-7383

### **MOSES LAKE, WA**

12238 N. FRONTAGE ROAD  
MOSES LAKE, WA 98837  
(866) 913-7383 | (509) 764-9130

### **SEATTLE, WA**

3707 AIRPORT WAY S.  
SEATTLE, WA 98134  
(800) 255-7383 | (206) 624-7383

### **YAKIMA, WA**

2028 RUDKIN ROAD  
UNION GAP, WA 98903  
(800) 734-7383 | (509) 453-3700

### **PASCO, WA**

1435 EAST HILLSBORO STREET  
PASCO, WA 99301  
(888) 330-7383 | (509) 545-3700

### **TACOMA, WA**

3443 20TH STREET E.  
FIFE, WA 98424  
(844) 263-7383 | (253) 922-7922

## CALIFORNIA

### **REDDING, CA**

17011 CLEAR CREEK ROAD  
REDDING, CA 96001  
(800) 227-3975 | (530) 246-2460

### **WEST SACRAMENTO, CA**

825 STILLWATER ROAD  
WEST SACRAMENTO, CA 95691  
(800) 533-4278 | (916) 441-6151

### **WEST SACRAMENTO, CA**

1925 ENTERPRISE BOULEVARD  
WEST SACRAMENTO, CA 95691  
(866) 970-6225 | (916) 375-3040

### **STOCKTON, CA**

3333 S. 99 W. FRONTAGE ROAD  
STOCKTON, CA 95215  
(866) 980-6225 | (209) 323-7300

### **TURLOCK, CA**

730 N. WALNUT ROAD  
TURLOCK, CA 95380  
(877) 877-2785 | (209) 262-3878

## MISSISSIPPI

### **JACKSON, MS**

330 GILCHRIST DRIVE  
PEARL, MS 39208  
(800) 264-4555 | (601) 932-4555

### **MERIDIAN, MS**

6410 I STREET  
MERIDIAN, MS 39301  
(866) 532-3094 | (601) 696-7171

## LOUISIANA

### **MONROE, LA**

7410 FRONTAGE ROAD  
MONROE, LA 71202  
(318) 855-2593

### **SHREVEPORT, LA**

5520 INDUSTRIAL DRIVE EXTENSION  
BOSSIER CITY, LA 71112  
(800) 847-7383 | (318) 746-3331

## ARKANSAS

### **LITTLE ROCK, AR**

1 PETERBILT DRIVE  
N. LITTLE ROCK, AR 72117  
(800) 282-1715 | (501) 955-2000

### **WEST MEMPHIS, AR**

3300 NE. SERVICE ROAD  
WEST MEMPHIS, AR 72301  
(800) 282-1715 | (870) 735-7716

## TENNESSEE

### **MEMPHIS, TN**

1745 EAST BROOKS ROAD  
MEMPHIS, TN 38116  
(800) 824-7992 | (901) 332-4000

### **JACKSON, TN**

141 LAW ROAD  
JACKSON, TN 38305  
(731) 924-7383 | (888) 484-8991